

PATENT SPECIFICATION

708,053



Date of filing Complete Specification June 5, 1951.

Application Date June 8, 1950.

No. 14295/50.

Complete Specification Published April 28, 1954.

Index at acceptance :—Class 61, Q3(A: B).

COMPLETE SPECIFICATION

A Paint Scraper

We, HARRY JOHN MEADS, of The Cottage, Leinthill Starke, and ALBERT WEST-MEADS, of Kohat, Bromfield Road, Ludlow, both in the County of Salop and both British Subjects, do hereby declare the invention, for which we pray that a patent may be granted to us, and the method by which it is to be performed, to be particularly described in and by the following statement:—

For the removal of paint from the woodwork or other part of a building, prior to repainting it is usual for the painter to use a blow lamp for softening or burning off the old paint and a scraper for detaching the old paint. This method is slow and, moreover, involves a risk of injury to the painter by accidental contact of the blow lamp flame with the hand holding the scraper.

The object of the invention is to enable old paint to be more expeditiously removed and without risk to the painter.

The invention comprises a sleeve adapted to be placed on the nozzle of a blow lamp, and provided at its front end with an opening through which the blow lamp flame can pass, and a scraper blade formed on or secured to the said end of the sleeve.

In the accompanying drawings:—

Figure 1 is a side elevation of a scraper constructed in accordance with the invention, the scraper being shown mounted on a blow-lamp, which latter is represented by dotted lines;

Figures 2, 3, and 4 are respectively a side elevation, plan and end view showing the scraper to a larger scale than Figure 1.

Referring to the drawings, there is provided a thin metal sleeve *a* which can be slipped over the blow lamp nozzle *b*, and on this sleeve there is formed or secured a scraper blade *c*. The sleeve *a* may be secured to the nozzle by a clamping screw, or (and as shown) a pair of straps *d* may be secured to it for attachment by screws *e* to any convenient part of the blow lamp

body *f*. The nozzle *b* may form part of an existing blow lamp.

The front end of the sleeve is partially closed so as to form a transverse opening *g* through which the flame can pass, and the blade is arranged parallel with one edge of this opening. In the example shown the opening is formed by pressing out from the front end of the sleeve a part *h* which serves as a lug to which the scraper blade *c* can be secured by screws *i*, the blade being thus conveniently replaceable when worn.

When in use the normal manipulation of the lamp is accompanied by both burning and scraping of the paint to be removed.

By this invention the process of burning off old paint can be greatly expedited, and moreover the above mentioned risk of injury to the painter is obviated.

What we claim is:—

1. A paint scraper comprising a sleeve adapted to be placed on the nozzle of a blow lamp, and provided at its front end with an opening through which the blow lamp flame can pass, and a scraper blade formed on or secured to the said end of the sleeve.

2. A paint scraper comprising a sleeve adapted to be placed on the nozzle of a blow lamp and having at its front end an opening through which the blow lamp flame can pass, the said opening being formed by pressing out from the closed end of the sleeve a part which can serve as a lug for carrying the scraper blade, and a scraper blade attached to the said lug.

3. A paint scraper as claimed in claim 1 or 2, having combined with the sleeve, a pair of straps adapted for attachment to the blow lamp body.

4. A paint scraper adapted for attachment to a blow lamp and comprising the combination and arrangement of parts substantially as described and as illustrated by Figures 2—3 of the accompanying drawings.

MARKS & CLERK.

[Price 2/8]

PROVISIONAL SPECIFICATION

A Paint Scraper

We, HARRY JOHN MEADS, of The Cottage, Leinthill Starkes, and ALBERT WEST-MEADS, of Kohat, Bromfield Road, Ludlow, both in the County of Salop, and
 5 both British Subjects, do hereby declare this invention to be described in the following statement:—

For the removal of paint from the wood-work or other part of a building,
 10 prior to re-painting it is usual for the painter to use a blow lamp for softening or burning off the old paint and a scraper for detaching the old paint. This method
 15 is slow and, moreover, involves a risk of injury to the painter by accidental contact of the blow lamp flame with the hand holding the scraper.

The object of the invention is to enable old paint to be more expeditiously
 20 removed and without risk to the painter.

The invention comprises a scraper incorporated with or adapted to be detachably mounted on the nozzle of a
 25 blow lamp so that burning and scraping can be effected concurrently.

In one embodiment of the invention as a separate fitting, there is provided a thin metal sleeve which can be slipped over

the blow lamp nozzle, and on this sleeve there is formed or secured a scraper
 30 blade. The sleeve may be secured to the nozzle by a clamping screw, or a pair of straps may be secured to it for attachment by screws to any convenient part of the
 35 blow lamp body.

Alternatively the scraper may be incorporated permanently with the nozzle or any other convenient part of the blow lamp. The first described example is,
 40 however, advantageous as it can readily be applied to existing blow lamps.

The front end of the sleeve is partially closed so as to form a transverse slot through which the flame can pass, and the blade is arranged parallel with this
 45 slot.

When in use the normal manipulation of the lamp is accompanied by both burning and scraping of the paint to be
 50 removed.

By this invention the process of burning off old paint can be greatly expedited, and moreover the above mentioned risk of injury to the painter is obviated.

MARKS & CLERK.

708,053 COMPLETE SPECIFICATION

1 SHEET

This drawing is a reproduction of the Original on a reduced scale.

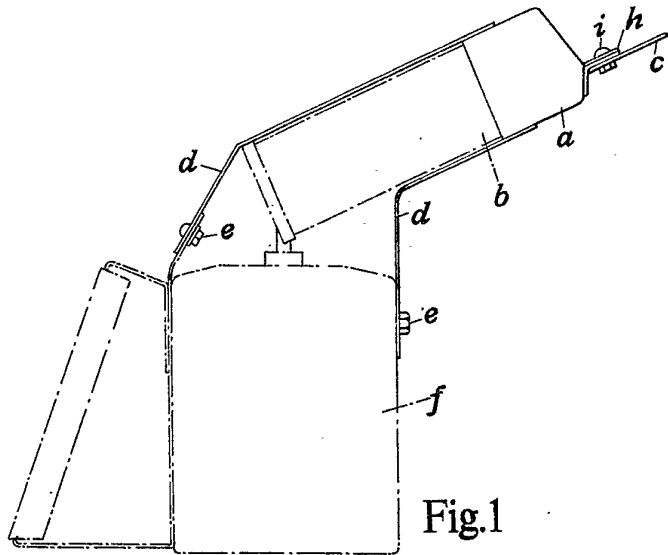


Fig.1

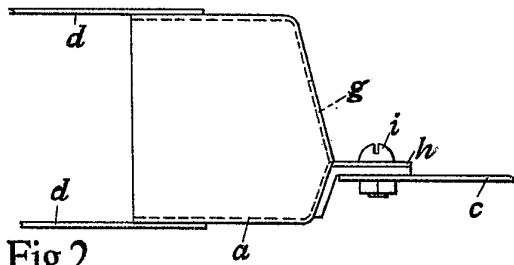


Fig.2

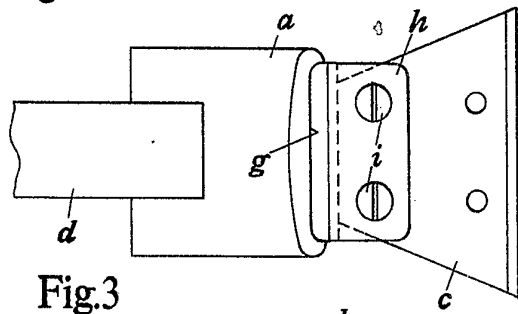


Fig.3

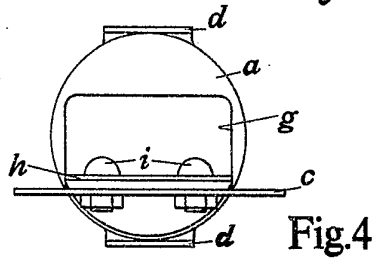


Fig.4